



roman blind
installation & operation
instructions

You will need:



Tape measure



Step Ladder



Pencil

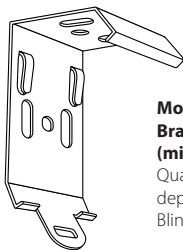


Screw Drill

IMPORTANT!

Exercise extreme caution when unpacking your new eBlind. Care must be taken when using knives or scissors as any cuts to the fabric or cords are not covered by warranty.

List of Components:



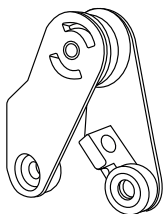
Mounting Brackets x 2 (minimum)

Quantity will vary depending on Blind Width.



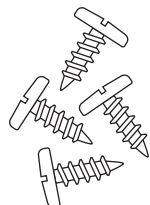
Child Safety Device x 1 Standard Corded Roman

Used to keep Cord from becoming a choking hazard for young children. (Device may differ from this picture depending on blind style).



Child Safety Device x 1 (Optional Chain Lift System only)

Used to keep Cord/Chain from becoming a choking hazard for young children. (Device may differ from this picture depending on blind style).

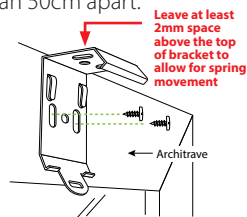


Screws (For timber installation only).

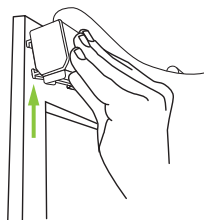
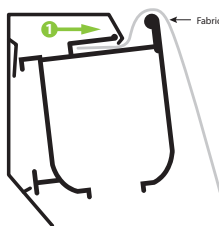
Consult your local hardware store for the appropriate fasteners if installing into brick or plaster, etc.

Face Fitting / Outside Mount

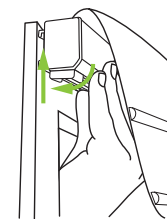
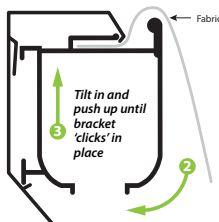
- 1 Measure your headrail width.
- 2 End Bracket should be approximately 5cm from each end of the headrail. Space any remaining brackets (if applicable) evenly across the headrail no more than 50cm apart.
- 3 Hold the bracket in position and mark the holes for the screws with a pencil - The top of the bracket should be set to the height from where your original measurement was taken.
- 4 Using your pencil marks as a guide, start by pre drilling the holes to avoid splitting the timber.
- 5 Hold the bracket in place and secure to the surface with the screws provided. For Plaster, Brick, Steel or Aluminium surfaces, contact your local hardware store for the correct fittings.
- 6 To install the headrail, please follow the directions as outlined below.



STEP 1 Slip the lower lip of the Chain Drive unit under the movable spring clip of the wall bracket.



STEP 2 With a 'push up and tilt forward' motion manoeuvre the Chain Drive unit so that the top lip of the Chain Drive unit clips over the fixed clip of the wall bracket.



- 7 Be sure the blind is secured into each bracket before operating the blind.

You will need:



Tape measure



Step Ladder



Pencil

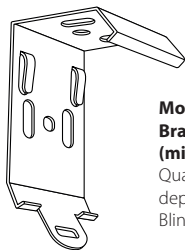


Screw Drill

IMPORTANT!

Exercise extreme caution when unpacking your new eBlind. Care must be taken when using knives or scissors as any cuts to the fabric or cords are not covered by warranty.

List of Components:



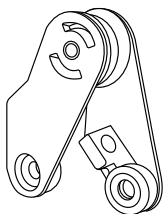
Mounting Brackets x 2 (minimum)

Quantity will vary depending on Blind Width.



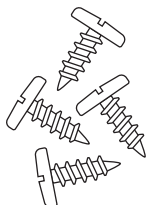
Child Safety Device x 1 Standard Corded Roman

Used to keep Cord from becoming a choking hazard for young children. (Device may differ from this picture depending on blind style).



Child Safety Device x 1 (Optional Chain Lift System only)

Used to keep Cord/Chain from becoming a choking hazard for young children. (Device may differ from this picture depending on blind style).

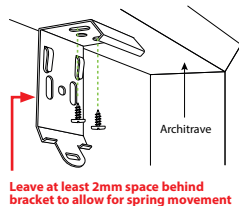


Screws (For timber installation only).

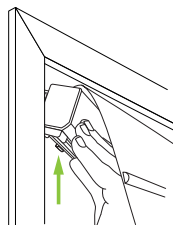
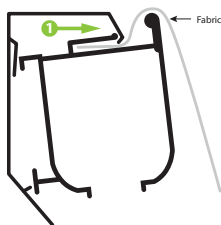
Consult your local hardware store for the appropriate fasteners if installing into brick or plaster, etc.

Recess Fitting / Inside Mount (Not Recommended)

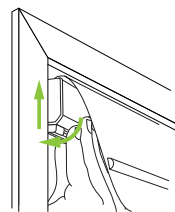
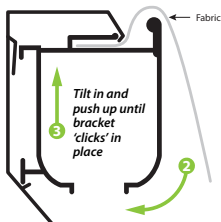
- 1 Measure your headrail width.
- 2 End Bracket should be approximately 5cm from each end of the headrail. Space any remaining brackets (if applicable) evenly across the headrail no more than 50cm apart.
- 3 Hold the bracket in position and mark the holes for the screws through the top of the bracket with a pencil.
- 4 Using your pencil marks as a guide, start by pre drilling the holes to avoid splitting the timber.
- 5 Hold the bracket in place and secure to the surface with the screws provided. For Plaster, Brick, Steel or Aluminium surfaces, contact your local hardware store for the correct fittings.
- 6 To install the headrail, please follow the directions as outlined below.



STEP 1 Slip the lower lip of the Chain Drive unit under the movable spring clip of the wall bracket.



STEP 2 With a 'push up and tilt forward' motion manoeuvre the Chain Drive unit so that the top lip of the Chain Drive unit clips over the fixed clip of the wall bracket.



- 7 Be sure the blind is secured into each bracket before operating the blind.

Operating the (Optional) Chain Drive Mechanism

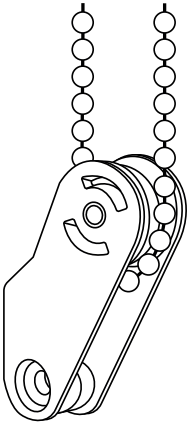
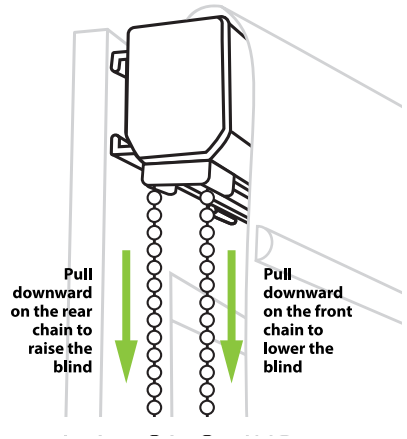
Pull downward on the **REAR** chain to raise the blind.

Pull downward on the **FRONT** chain to lower the blind.

Even though the chain is a continuous loop, if you pull the chain in the wrong direction (eg: the front chain to raise the blind) the blind will rise at an angle.

To rectify this, lower the blind fully and then simply use the rear chain to raise the blind which will level it again.

Under no circumstances should the cords at the rear of the blind be untied to adjust - only ever use the chain.



Chain Tensioner Installation

To avoid creating a possible strangulation hazard for children, this corded internal window covering must be installed in such a way that a loose cord or chain cannot form a loop of 220mm or longer at a height of less than 1600mm above floor level.

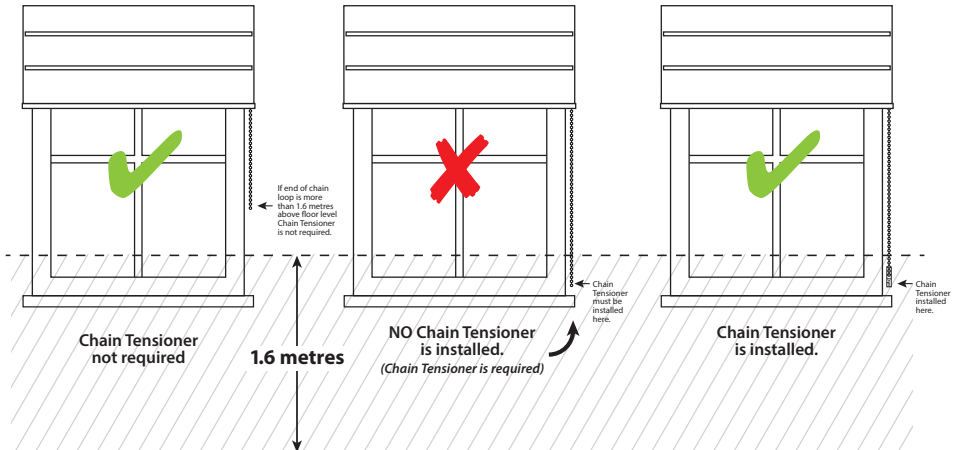
Where you install a chain tensioner lower than 1600mm above floor level, ensure that a child cannot remove the chain from the tensioner.

WARNING

Young children have died by wrapping loose curtain and blind cords or chains around their necks.

Secure cords or chains with cord guides or keep them out of reach by winding them around a cleat.

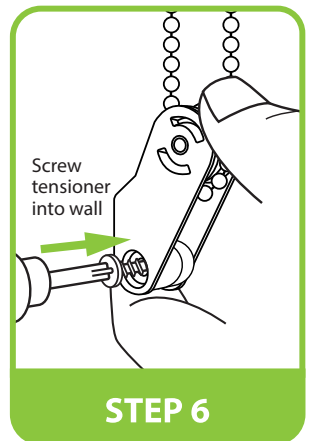
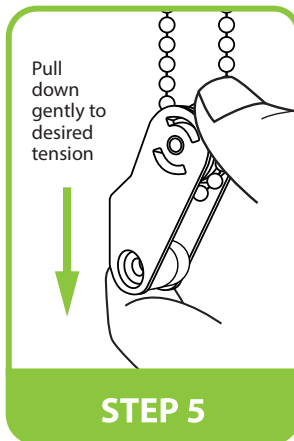
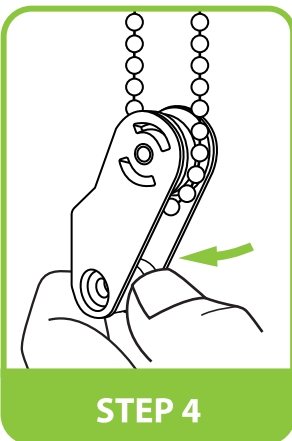
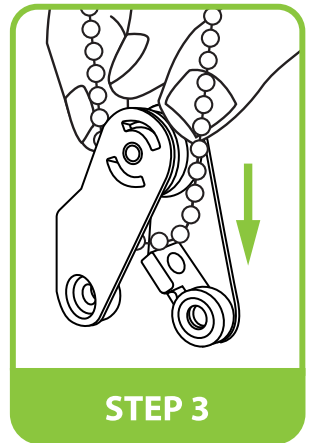
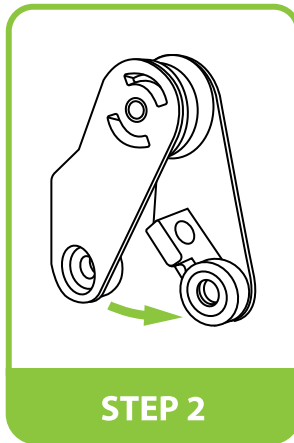
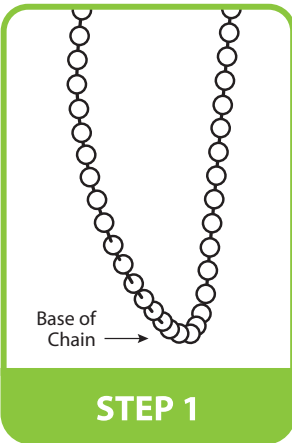
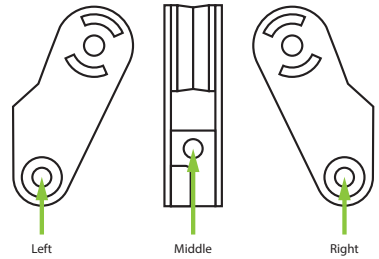
Move cots and furniture away from window covering cords or chains.



Installing the Chain Tensioner

- STEP 1** Locate the base of the chain loop.
- STEP 2-4** Open the tensioner as shown and place it over the chain. Once the chain is enclosed, swivel the tensioner back to the original position.
- STEP 5** Tighten the chain by pulling the chain tensioner and chain downward.
- NOTE:** Don't pull too tightly. Allow enough slack to allow for chain to still move freely.
- STEP 6** Screw chain tensioner into wall, architrave or window frame.

The Chain Tensioner can be screwed onto the wall, architrave or window frame from 3 entry points:





P.O. Box 2248
Seaford Victoria 3198
Freecall: 1800 eblinds